



ILLUMINA COLOR

ILLUMINA COLOR USAGE GUIDELINES

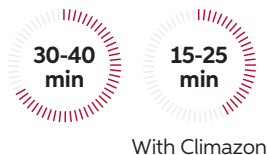
100% NATURAL LOOKING COLOR. UP TO 100% GREY COVERAGE.



Full-head Application

Same depth/darker

Apply the color from roots to ends, on dry hair.

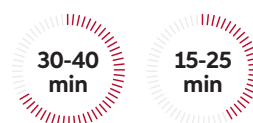


First-time Lightening

01 Apply the color mixture to the lengths and ends only. Leave approximately 2cm free from the scalp.



02 Mix fresh color and apply to the roots. Develop for full development time.



Welloxon Perfect - The Ultimate Partner

ILLUMINA COLOR Up to 100% grey coverage with a sheer result.

OPAL-ESSENCE BY ILLUMINA COLOR Opalescent finish, no grey coverage.

1.9% Welloxon Perfect (6 Vol)
Glossing and toning services. 1:2

4% Welloxon Perfect (13 Vol)
Deeper results on natural hair.

6% Welloxon Perfect (20 Vol)
1 level of lift, same depth or darker. Grey coverage.

9% Welloxon Perfect (30 Vol)
2 levels of lift.

12% Welloxon Perfect (40 Vol)
3 levels of lift.

1.9% Welloxon Perfect (6 Vol)
Maximum opalescent shine.

4% Welloxon Perfect (13 Vol)
Pure use or combination with Illumina Color with supreme opalescent shine.

6% Welloxon Perfect (20 Vol)
Pure use or combination with Illumina Color with supreme opalescent shine.

9% Welloxon Perfect (30 Vol)
Not recommended!

12% Welloxon Perfect (40 Vol)
Not recommended!

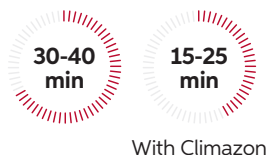
NOTE: Opal-Essence shades will gently lighten natural hair as no depth is present. Take into consideration the natural underlying tone, combine with Illumina Color when depth is required.



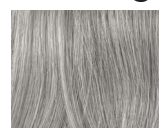
Regrowth Application

Including grey coverage root application

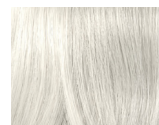
Apply to root area, applying to the area with the highest percentage of grey hair first.



Coloring Grey Hair



Up to 70% Grey Hair
Use any shade from Illumina Color.



70-100% Grey Hair
Mix 1:1 with corresponding Illumina Color neutral shade + Welloxon Perfect 6%

e.g. 30g 7/ + 30g 7/35 + 60g 6%/20 vol



Grey Blending

Grey hair is blended enhancing natural highs and lows.

Recommended shade levels 5/ to 10/.





30g
Illumina Color

60g
Welloxon Perfect
Pastel 1.9%

Intense Balance

Rejuvenate the color on the ends for even results and healthy hair thanks to Metal Purifier Technology on faded lengths and ends.



10-15
min

Soft Balance

To add a hint of color and shine and achieve a freshly colored feel on every visit. After completion of development time dampen the hair with water and emulsify the color through the lengths and ends.



5-10
min



30g
Shinefinity

30g
Shinefinity Activator
Bowl & Brush or Bottle

Refresh with Shinefinity

Pair Shinefinity with Illumina Color on the roots and balance faded lengths and ends with Shinefinity for an ultra-natural finish. Apply root color first. For the last 20 min of the development time, apply directly onto lengths and ends. Develop together, then rinse.



20
min



30g
Illumina Color

60g
Welloxon Perfect
Pastel 1.9%

Blonde Toning

Achieve a beautiful luminous finish after pre-lightening services. Apply to the lightened areas needing optimal neutralization first. Comb through for even results. Visually check, until desired result achieved.



5-15
min

IMPORTANT! In order to achieve an even colour result comb the hair every 5 minutes during development time until the desired colour result is achieved.

Glossing

Gently infuse the hair with a subtle color and a luminous shine. Glossing services are ideal for clients wishing to try Illumina Color for the first time or to revive the color and shine in between appointments.

Suitable for all depths, hair types, and color directions from blondes, brunettes, and coppers.



30g
Illumina
Color

30g
Welloxon Perfect
Pastel 1.9%

30g
Color Service
Post Color Treatment



5-10
min

Opal-Essence

To achieve beautiful opalescent metallic milky sheen after pre-lightening services, use Opal-Essence alone or mixed together with Illumina Color + Welloxon Perfect Pastel 1.9%



15-30
min

IMPORTANT! To achieve soft lift to natural hair during toning. Apply to roots to ends, comb through for a base breaking effect.



30g
Opal Essence

30g
Welloxon Perfect
Pastel 1.9%

After Treatment

Using pH-optimized care products will enable better color retention and give an excellent hair feel after a color service.

After completion of the development time, emulsify the color with a little warm water and rinse out well. Lightly shampoo with Invigo Color Brilliance Shampoo. To neutralize oxidation residues and stabilize color, use Color Service Post Color Treatment.



Numbering System

Depth indicates dark or light and ranges from 10/ Lightest Blonde to 4/ Medium Brown.

Tone indicates the tonal character of the shade.



Depth of color | Minor tone of color
Major tone of color

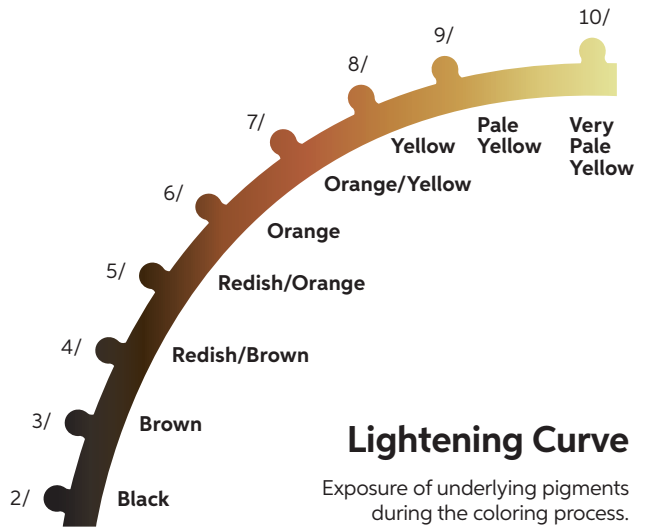
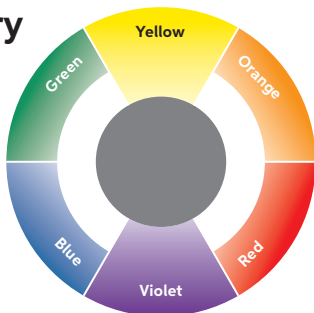
10/	Lightest Blonde	/0	Natural
9/	Very Light Blonde	/1	Ash (grey)
8/	Light Blonde	/2	Matte (green)
7/	Medium Blonde	/3	Gold (yellow)
6/	Dark Blonde	/4	Red (warm)
5/	Light Brown	/5	Mahogany
4/	Medium Brown	/6	Violet (cool)
		/7	Brown (warm)
		/8	Pearl (blue)
		/9	Cendre (soft violet)

Exposed Underlying Pigment

Depth	Underlying Tone	Neutralizing Tone
10/ Lightest Blonde	Very Pale Yellow	Light Violet
9/ Very Light Blonde	Pale Yellow	Violet
8/ Light Blonde	Yellow	Violet
7/ Medium Blonde	Orange Yellow	Blue Violet
6/ Dark Blonde	Orange	Blue
5/ Light Blonde	Red Orange	Green Blue
4/ Medium Brown	Red	Green
3/ Dark Brown	Red	Green
2/ Black	Red	Green

Complementary Color

Opposite colors neutralize one another.



Lightening Curve

Exposure of underlying pigments during the coloring process.

Allergy Alert Test

Although the risk of developing a new allergy is reduced, there remains a risk of an allergic reaction that can be severe. **Always perform an allergy test 48 hours before any color service.**



Step 01

Mix 5g of the color you decided on during consultation with 5g dedicated developer.



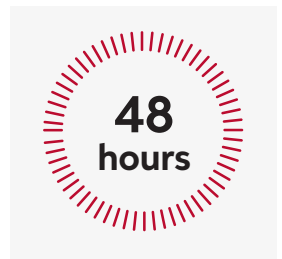
Step 02

Apply the color in to 1cm² directly below the crook of the elbow.



Step 03

Leave the color uncovered for 45 minutes. Then rinse the area with lukewarm water and pat dry with a clean towel.



Step 04

Ask the client to either come back to the salon after 48 hours or call you to inform you of the result.

Ask your client to leave the test area undisturbed for 48 hours. If there are any signs of redness, burning or itching the color product must not be applied. The client must seek medical advice before coloring their hair again. If your client has ever experienced an allergic reaction to hair colorants you should not color.



ILLUMINA COLOR

100% NATURAL LOOKING COLOR
UP TO 100% GREY COVERAGE

COOL

TONE	X/02	X/05	X/1	X/13	X/16	X/19	X/59	X/60	X/69	X/81	X/93
10/		10/05	10/1						10/69	10/81	10/93
9/						9/19	9/59	9/60			
8/		8/05	8/1	8/13					8/69		8/93
7/										7/81	
6/					6/16	6/19					
5/	5/02									5/81	
4/											

OPAL-ESSENCE



WARM

TONE	X/03	X/31	X/35	X/36	X/37	X/38	X/42	X/43	X/7	X/75	X/76
10/				10/36		10/38					
9/	9/03				NEW 9/37			9/43	9/7		
8/				NEW 8/36	8/37	8/38					
7/		7/31	7/35				NEW 7/42	7/43	7/7	NEW 7/75	
6/					6/37						6/76
5/			5/35					5/43	5/7		
4/											

NEUTRAL

TONE	X/
10/	10/
9/	9/
8/	8/
7/	7/
6/	6/
5/	5/
4/	4/