



KOLESTON PERFECT <sup>ME+</sup>

# KOLESTON PERFECT USAGE GUIDELINES

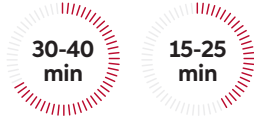
## HEALTHY LOOKING PERMANENT COLOR RESULTS WITH UP TO 100% GREY COVERAGE



### Full-head application

Same depth/darker

Apply the coloring mixture immediately from roots to ends.



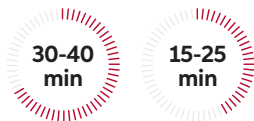
With Climazon



### Regrowth application

Grey coverage or lightening

Apply first at the areas of the highest percentage of grey. If lightening, begin at the areas where the strongest degree of lightening is required.



With Climazon

### Coloring grey hair

The addition of Pure Natural shade is required to give sufficient grey coverage



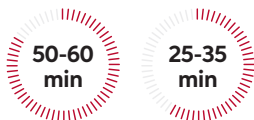
**30-50% Grey Hair**  
Add 1/3 of a Pure Naturals shade.  
E.g 15g 7/0 + 45g 7/75 + 60g 6%



**50-100% Grey Hair**  
Add 1/2 of a Pure Naturals shade.  
E.g 30g 7/0 + 30g 7/75 + 60g 6%



### Lightening with Special Blonde



With Climazon

## Welloxon Perfect

#### 1.9 % Welloxon Perfect (6 Vol)

For coloring balancing, blonde toning and glossing services.

#### 4 % Welloxon Perfect (13 Vol)

Same depth or darker. To achieve deeper results on natural hair with no grey coverage required.

#### 6 % Welloxon Perfect (20 Vol)

For 1 level of lift. Coverage of grey hair. Same depth or darker.

#### 9 % Welloxon Perfect (30 Vol)

For 2 levels of lift. 3 levels with Special Blonde.

#### 12 % Welloxon Perfect (40 Vol)

For 3 levels of lift. 4-5 levels with Special Blonde.

## First time lightening

**01** Apply the coloring mixture to lengths and ends only. Leave approximately 2 cm free from the scalp.

Pure Naturals, Rich Naturals & Deep Browns



With Climazon

Vibrant Reds & Special Blonde



With Climazon

**02** Apply the coloring mixture to the roots.

Pure Naturals, RichNaturals, Deep Browns & Vibrant Reds



Special Blonde



With Climazon



30g  
Koleston  
Perfect

60g  
Welloxon Perfect  
Pastel 1.9%

## Intense Balance

Rejuvenate the color to achieve pure even results on faded ends.

Apply the color on lengths for the last 10-15 min of the development time for the roots. Comb through to distribute evenly. Remove and treat the hair as usual.



## Pure Soft Balance

Adds a hint of color and fresh shine to maintain pure color results visit after visit.

After completion of development time dampen the hair well with water (with Special Blonde use 100 ml) and emulsify the color through the lengths and ends.



30g  
Koleston  
Perfect

60g  
Welloxon Perfect  
Pastel 1.9%

## Pastel Toning

Create beautiful pastel blonde result to enhance or correct unwanted tones. Evenly pre-lightened is required for this (1/2 level lighter than required final result).



**IMPORTANT!** In order to achieve an even colour result comb the hair every 5 minutes during development time until the desired colour result is achieved.



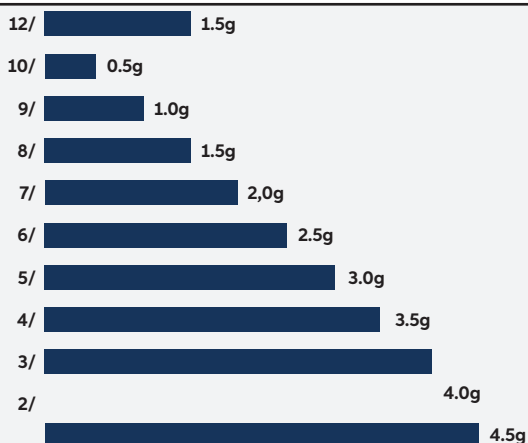
30g  
Koleston  
Perfect

30g  
Welloxon Perfect  
Pastel 1.9%

30g Color Service  
Post Color Treatment

## Glossing

A quick service to infuse color and radiant shine on the day or as a color top-up in-between visits to keep that perfect colorful result.



## Special Mix

Application possibilities and intensification of color shades. Koleston Perfect Special Mix tones are pure color. The lighter the shade, the less mix tone is needed.

**Exception:**  
Level 12/

**Mixing Ratio:**  
1:1 for all Special Mix shades except 0/43  
E.g. 30g Special Mix = 30g Welloxon Perfect  
1:2 for Special Mix 0/43  
E.g. 30g Special Mix + 60g Welloxon Perfect



## After Treatment

Using pH optimized care products will enable a better color retention and given an excellent hair feel after a color service.

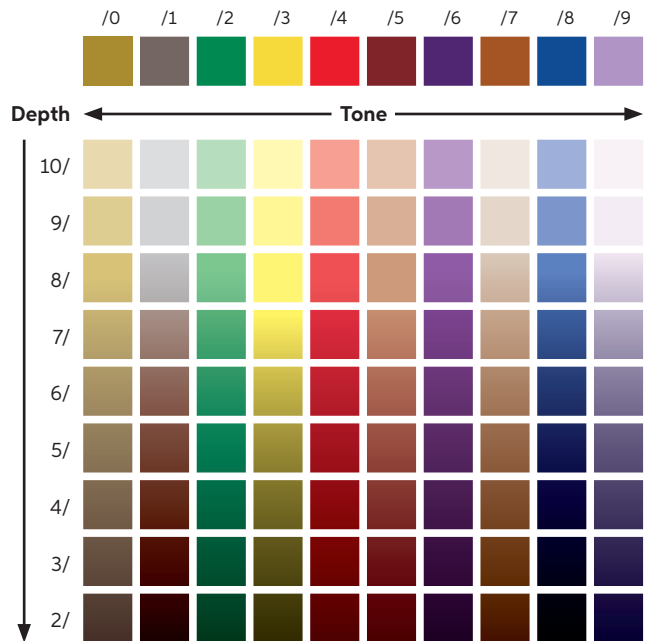
After completion of the development time, emulsify the color with a little warm water and rinse out well. Lightly shampoo with Invigo Color Brilliance Shampoo. To neutralize oxidation residues and stabilize color, use Color Service Post Color Treatment.

## Numbering System

**Depth** indicates dark or light.

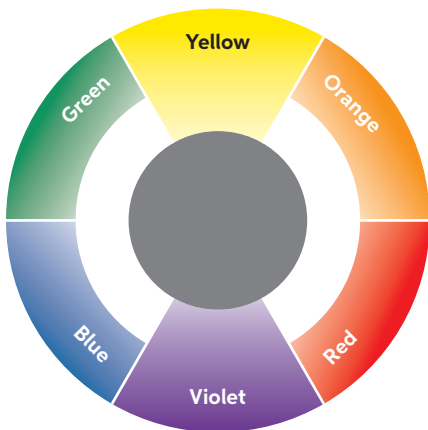
**Tone** indicates the tonal character of the shade. Here we can see the depth or base of a color from 2/ - 10/ and the tone from /0 - /9.

At the lighter depth the tones are brighter, as the depth gets darker the tone becomes more subtle.



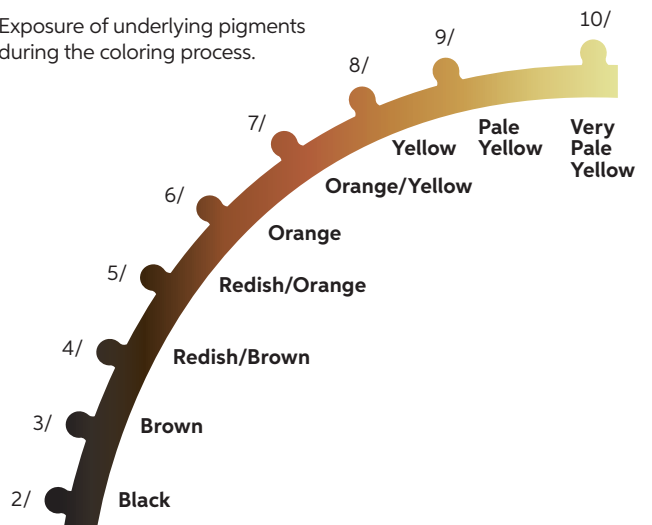
## Complementary Color

Opposite colors neutralise one another.



## Lightening Curve

Exposure of underlying pigments during the coloring process.



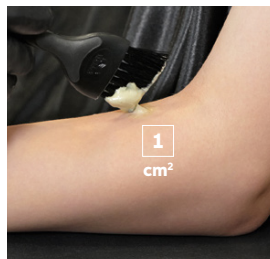
## Allergy Alert Test

Although the risk of developing a new allergy is reduced, there remains a risk of an allergic reaction that can be severe. **Always perform an allergy test 48 hours before any color service.**



### Step 01

Mix 5g of the color you decided on during consultation with 5g dedicated developer.



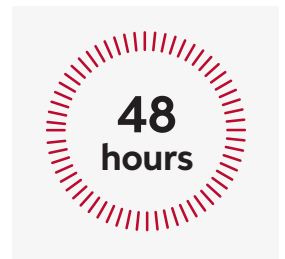
### Step 02

Apply the color in to 1cm<sup>2</sup> directly below the crook of the elbow.



### Step 03

Leave the color uncovered for 45 minutes. Then rinse the area with lukewarm water and pat dry with a clean towel.



### Step 04

Ask the client to either come back to the salon after 48 hours or call you to inform you of the result.

Ask your client to leave the test area undisturbed for 48 hours. If there are any signs of redness, burning or itching the color product must not be applied. The client must seek medical advice before coloring their hair again. If your client has ever experienced an allergic reaction to hair colorants you should not color.

## PURE NATURALS

## RICH NATURALS

## DEEP BROWNS

TONE	PURE	RESISTANT COVER	RESISTANT COOL COVER	ULTRA	COOL		WARM	
	X/0	XX/0	XX/02	X/00	X/01	X/03	X/04	X/07
10/	10/0			10/00		10/03	10/04	
9/	9/0	99/0		9/00	9/01	9/03	9/04	
8/	8/0	88/0	88/02	8/00	8/01	8/03	8/04	8/07
7/	7/0	77/0	77/02	7/00	7/01	7/03		7/07
6/	6/0	66/0	66/02	6/00				6/07
5/	5/0	55/0	55/02	5/00				5/07
4/	4/0	44/0		4/00				4/07
3/	3/0	33/0		3/00				
2/	2/0							

TONE	COOL				WARM				COOL								
	/1	/16	/17	/18	/2	/3	/31	/36	/37	/38	/8	/81	/86	/91	/95	/96	/97
10/	10/1	10/16				10/3	10/31			10/38	10/8		10/86		10/95	10/96	10/97
9/	9/1	9/16	9/17			9/3	9/31			9/38	9/8	9/81				9/96	9/97
8/	8/1				8/2	8/3				8/38						8/96	8/97
7/	7/1		7/17	7/18		7/3	7/31	7/36	7/37	7/38							
6/	6/1				6/2	6/3							6/91			6/97	
5/	5/1			5/18	5/2	5/3			5/37								
4/						4/3											
3/																	
2/																	

TONE	WARM	COOL	WARM	COOL	WARM	
	/7	/71	/73	/74	/75	/77
10/						
9/	9/7		9/73			
8/	8/7	8/71	8/73	8/74		
7/	7/7	7/71	7/73		7/75	7/77
6/	6/7	6/71	6/73	6/74	6/75	6/77
5/	5/7	5/71	5/73		5/75	5/77
4/		4/71			4/75	4/77
3/						
2/						

## VIBRANT REDS

## SPECIAL BLONDE

TONE	WARM	COOL	WARM		COOL	WARM	COOL						
	/34	/41	/43	XX/43	XX/44	/45	XX/46	/47	/5	XX/55	/56	XX/65	XX/66
10/													
9/					99/44								
8/	8/34	8/41	8/43	88/43		8/45							
7/	7/34		7/43	77/43	77/44		77/46	7/47					
6/	6/34	6/41	6/43		66/44	6/45	66/46		6/5	66/55	66/56		
5/		5/41	5/43				55/46		5/5	55/55		55/65	55/66
4/					44/44							44/65	
3/									33/55			33/66	
2/													

TONE	NATURAL	WARM		COOL							
	/0	/03	/07	/1	/11	/16	/22	/61	/81	/89	/96
10/	12/0	12/03	12/07	12/1	12/11	12/16	12/22	12/61	12/81	12/89	12/96

## SPECIAL MIX

TONE	CLEAR	COOL		WARM				COOL		
	/00	/11	/28	/30	/33	/43	/44	/65	/66	/88
0/	0/00	0/11	0/28	0/30	0/33	0/43	0/44	0/65	0/66	0/88