



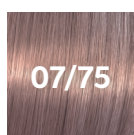
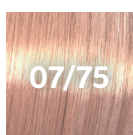
SHINEFINITY

SHINEFINITY USAGE GUIDELINES

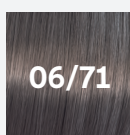


Apply to towel-dried or dry hair. **Develop up to 20 min.** When fully developed add some water and emulsify the color to avoid any skin staining. Shampoo the hair, no post color treatment is needed. Use conditioner if the hair requires.

With Shinefinity **you can adapt your results** depending on how you work with the product.



Expect softer result on pre-shampooed hair and shorter development time.



TOP TIP

Using heat gives more intense results, great when you want to intensify your reds or blend away first signs of gray hair.



Shinefinity Glaze

Use after bleaching services, or for natural hair.

Apply to towel-dried or dry hair.



Speed Glaze

Ideal for in-between color appointments, and to adjust or enhance blonde hair.

Apply to towel-dried hair.



Corrective Glaze

For natural correction services. Balance moderate unevenness or darken without pre filling.

Applying on dry hair, this will allow for maximum saturation.



Balancing Glaze

Use as a perfect complement when balancing lengths and ends whilst using Koleston Perfect or Illumina Color on the root.

Apply your root color as usual, **develop for 10 min** and apply your Shinefinity target shade to the lengths and ends.





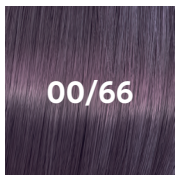
After Treatment

COLORMOTION+

Our best color care line for multi processed hair.

INFINITE POSSIBILITIES

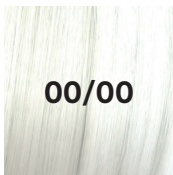
The three booster tones are ideal to expand the usage of the **SHINEFINITY** portfolio.



00/66



00/89

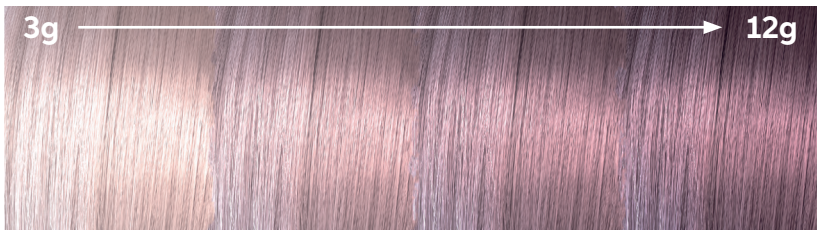


00/00

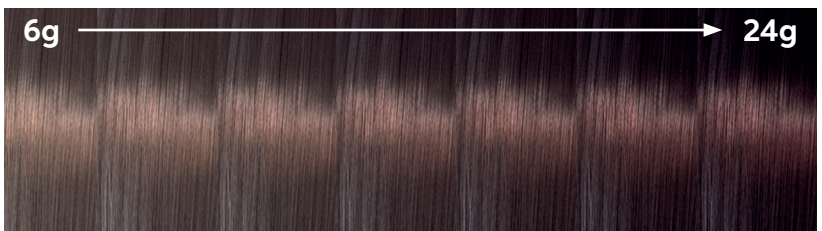
— **CLEAR**, use on it's own for shine boost or dilute any shade in the portfolio.



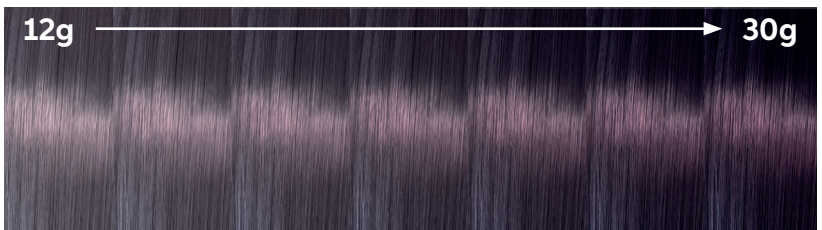
LEVEL 09/ – 08/



LEVEL 07/ – 06/



LEVEL 05 AND BELOW



00/66 was used at different quantities in a level 09/, 07/, 05/ shade.

Color Essentials

Depth indicates dark or light and ranges from 10/ Lightest Blonde to 4/ Medium Brown.

Tone indicates the tonal character of the shade.



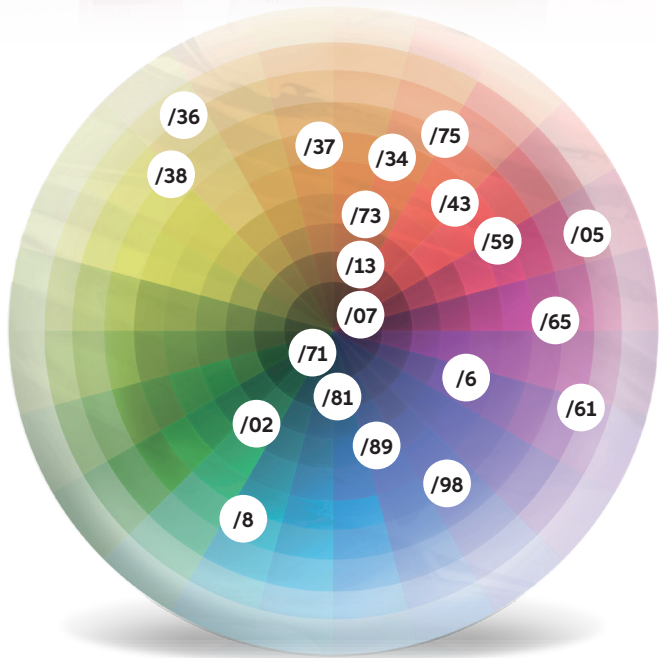
“0” in front of the depth indicates:
Translucency
ZERO lift and
ZERO damage

Minor tone of color
Major tone of color

Depth of color

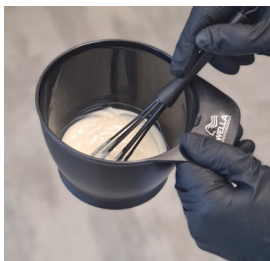


	10/ Lightest Blonde		/0 Natural
	9/ Very Light Blonde		/1 Ash (grey)
	8/ Light Blonde		/2 Matte (green)
	7/ Medium Blonde		/3 Gold (yellow)
	6/ Dark Blonde		/4 Red (warm)
	5/ Light Brown		/5 Mahogany
	4/ Medium Brown		/6 Violet (cool)
			/7 Brown (warm)
			/8 Pearl (blue)
			/9 Cendre (soft violet)



Allergy Alert Test

Although the risk of developing a new allergy is reduced, there remains a risk of an allergic reaction that can be severe. **Always perform an allergy test 48 hours before any color service.**



Step 01

Mix 5g of the color you decided on during consultation with 5g dedicated developer.



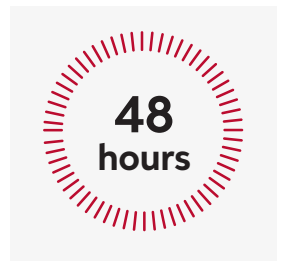
Step 02

Apply the color in to 1cm² directly below the crook of the elbow.



Step 03

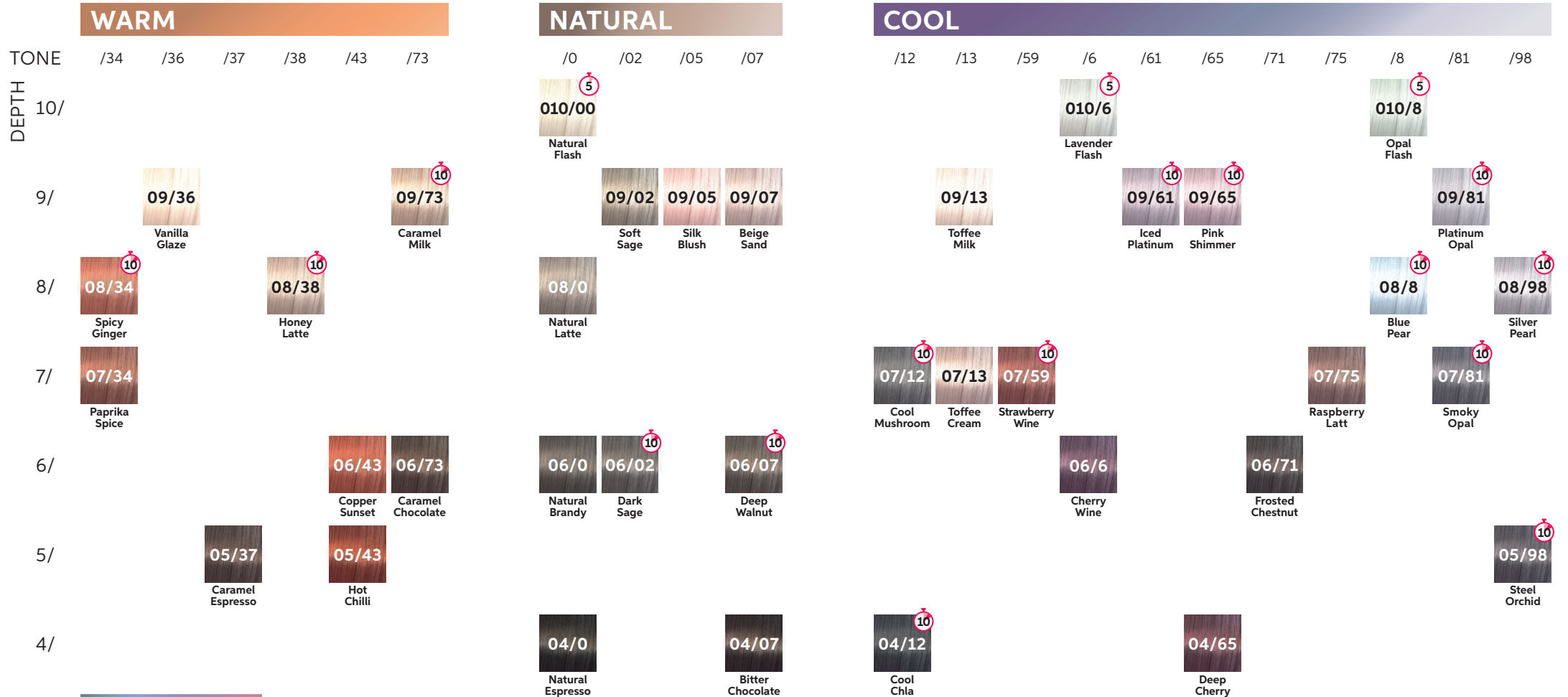
Leave the color uncovered for 45 minutes. Then rinse the area with lukewarm water and pat dry with a clean towel.



Step 04

Ask the client to either come back to the salon after 48 hours or call you to inform you of the result.

Ask your client to leave the test area undisturbed for 48 hours. If there are any signs of redness, burning or itching the color product must not be applied. The client must seek medical advice before coloring their hair again. If your client has ever experienced an allergic reaction to hair colorants you should not color.



BOOSTER



DEVELOPMENT TIME

Without heat: up to 20 minutes. For more intense results use added heat: 15 minutes.



Ideal usage after a lightening service. Develop for 5 minutes*



Shade suitable for fast services from 10min*

* Development time under 20 minutes can reduce longevity.